



DISCOVER

GONZALES CANYON

NEIGHBORHOOD PARK

COMMUNITY MEETING #1, MARCH 5, 2013



SCHMIDT DESIGN GROUP, INC.
BALANCING ARTISTIC EXPRESSION IN DESIGN WITH ENVIRONMENTAL SENSITIVITY





INTRODUCTIONS

Schmidt Design Group

- JT Barr, RLA - Senior Associate
- Todd Schechinger, ASLA -
Landscape Designer

Pardee Homes

- Beth Fischer - Division President
- Barbara Biernacka - Landscape/Architectural
Manager

City of San Diego - Public Works

- Mark Calleran - Project Manager



AGENDA

- Design Process
- Site Analysis
- Survey Results
- Preliminary Alternatives
- Questions and Discussion





Gonzales Canyon Neighborhood Park

Design Process



DESIGN PROCESS

- **QUESTIONNAIRE:**
Collect comments and preferences to be considered during the design process.
- **COMMUNITY MEETING #1, TODAY:**
Discuss opportunities & constraints, program elements, design alternatives, and obtain feedback.
- **SUBCOMMITTEE MEETINGS, MARCH/APRIL, 2013:**
Present refined design alternative for feedback.
- **COMMUNITY MEETING #2, MAY, 2013:**
Present refined General Development Plan for community feedback.
- **AREA COMMITTEE/DESIGN REVIEW/PUBLIC HEARINGS, JUNE, 2013**

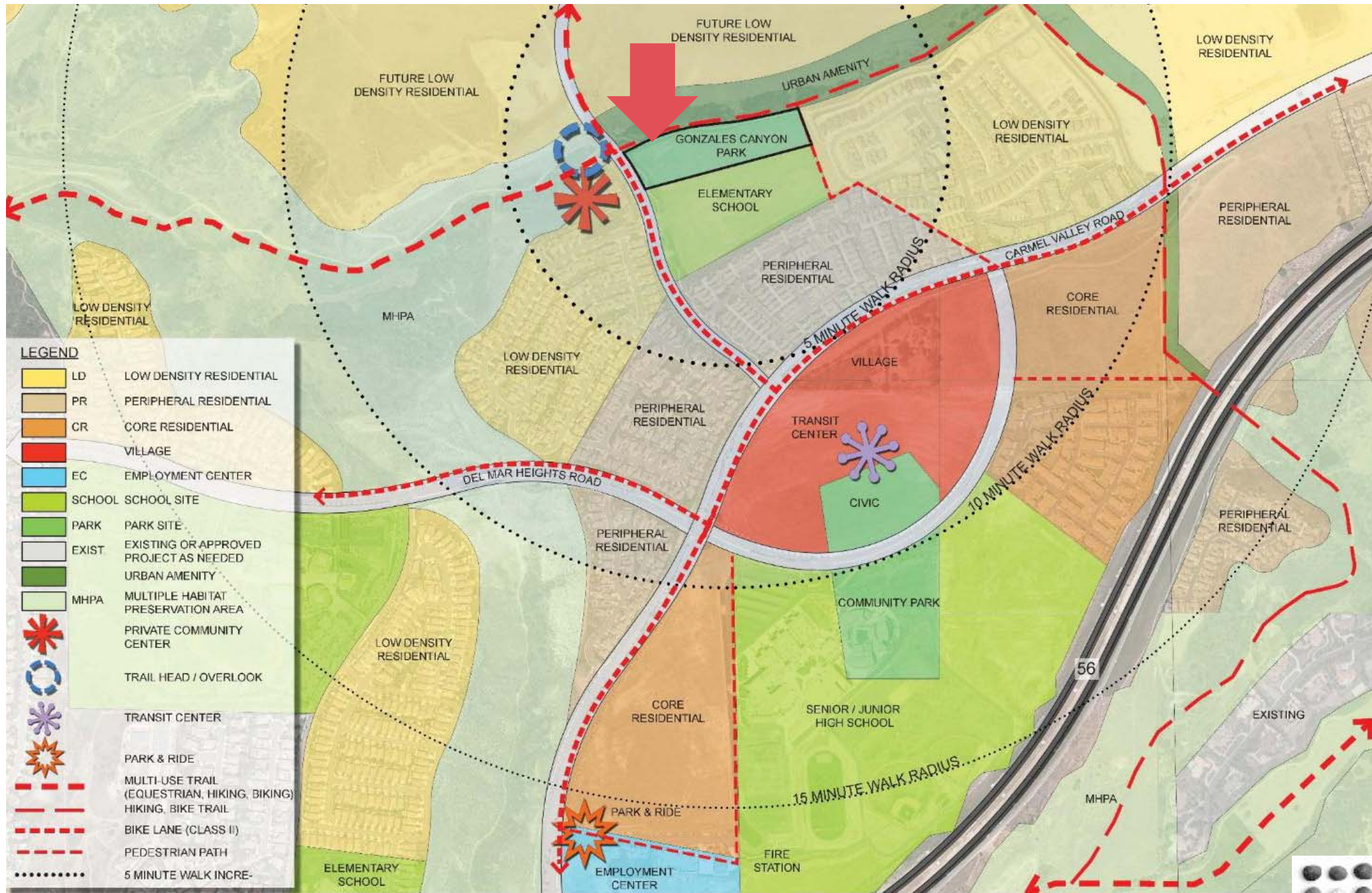




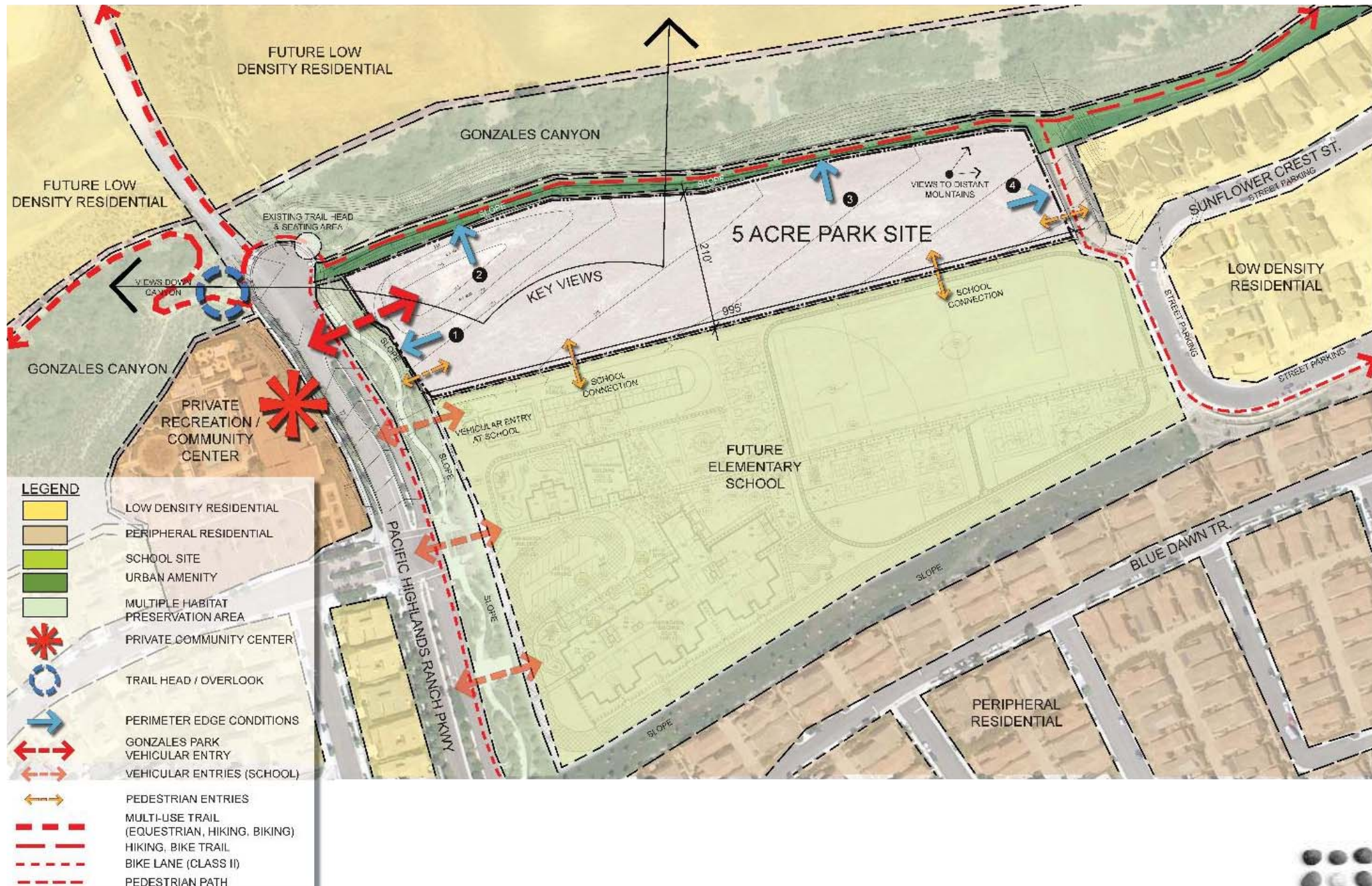
Gonzales Canyon Neighborhood Park

Site Analysis

EXPLORING THE POTENTIAL COMMUNITY CONTEXT



EXPLORING THE POTENTIAL SITE ANALYSIS

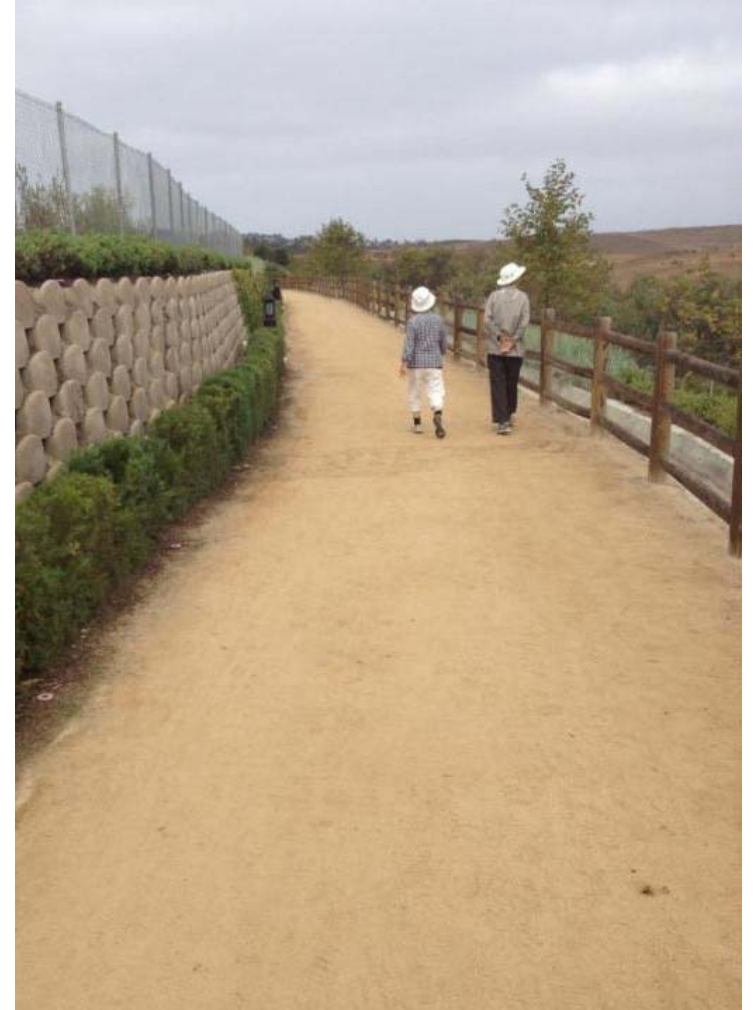


EXPLORING THE POTENTIAL LANDSCAPE CHARACTER



EXPLORING THE POTENTIAL

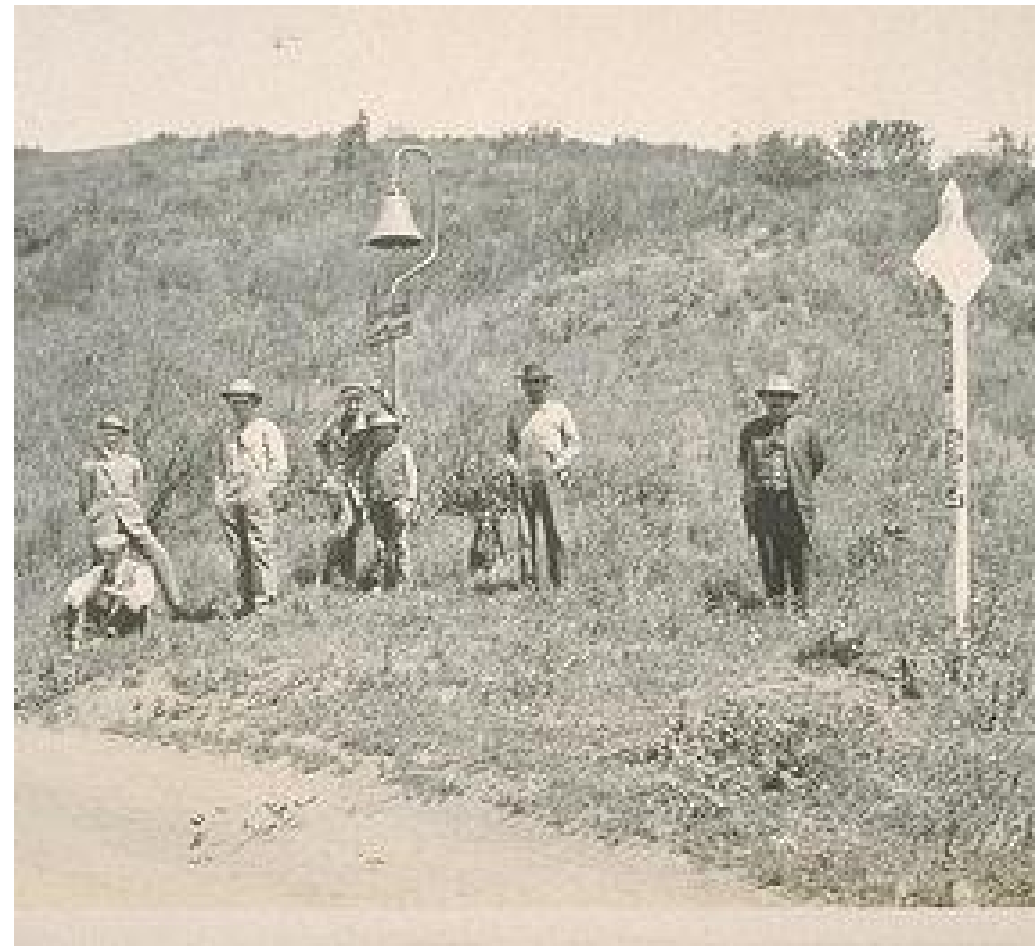
GONZALES CANYON AND URBAN AMENITY TRAIL



EXPLORING THE POTENTIAL CANYON HABITAT



EXPLORING THE POTENTIAL RELATIONSHIP TO THE EL CAMINO REAL





Gonzales Canyon Neighborhood Park

Survey Results

QUESTIONNAIRE

FEEDBACK FROM QUESTIONNAIRE

Gonzales Canyon Neighborhood Park – Amenities Survey February 5, 2013

The Gonzales Canyon Neighborhood Park project will be a new amenity for Pacific Highland Ranch and provide space for play, relaxation and community gatherings. This questionnaire will help us understand how you anticipate using your new park. Please respond to the questions below and provide your ideas, comments and preferences so that they may be considered in the design process.

Activities and Facilities: What activities would you like to see included in the park?
Circle the number that describes your preference (1=less desirable, 5=most desirable)

- | | |
|---|---|
| 1 2 3 4 5 Open lawn areas | 1 2 3 4 5 Seating areas along a paved path |
| 1 2 3 4 5 Children's play area (2-5 year olds) | 1 2 3 4 5 Picnic tables |
| 1 2 3 4 5 Children's play area (6-12 year olds) | 1 2 3 4 5 Shade structure/large gazebo |
| 1 2 3 4 5 Climbing rock wall/ natural play | 1 2 3 4 5 Security lighting |
| 1 2 3 4 5 Swings | 1 2 3 4 5 Small group picnic/barbeque areas |
| 1 2 3 4 5 Basketball hoop or half court | 1 2 3 4 5 Nature trail and native plant garden |
| 1 2 3 4 5 Tennis court | 1 2 3 4 5 Shade trees |
| 1 2 3 4 5 Exercise stations (par-course) | 1 2 3 4 5 Community garden |
| 1 2 3 4 5 Horseshoes | 1 2 3 4 5 Public art integrated into park paving, walls |
| 1 2 3 4 5 Bocce ball court | 1 2 3 4 5 Interpretive or educational display |
| 1 2 3 4 5 Amphitheater | 1 2 3 4 5 Restroom building |
| 1 2 3 4 5 Dog park/dog run | |

Are there facilities not listed above that you would like to see? Please list.

Park Use: Approximately how often do you anticipate visiting the park?

____ Often: 3 or more times a week ____ 1-2 times a week ____ 1-2 times a month

____ Occasionally: more than 3 times a year ____ Rarely: 1-2 times a year or less

Will you use the park mostly during the:

____ Day ____ Evening
____ Week ____ Weekend

Other Ideas and Comments:

Personal Profile

A) Age of responder? (optional) _____

B) Which community do you live in? (optional) _____

C) Would you be interested in attending public meetings focused on providing input during the park design process?

____ Yes ____ No

If yes, please provide the following information to receive future meeting notices (optional):

Name: _____

Address: _____

E-Mail: _____

Return your questionnaire by February 20th via fax, mail, or email to:

Schmidt Design Group, Inc., 2655 Fourth Ave., San Diego, CA 92103, Fax: (619) 236-8792 info@schmidt-design.com

City of San Diego Contact:

Mark Calleran, Project Manager, Ph: (619) 533-5197, Fax 525-8224, E-mail: mcalleran@sandiego.gov

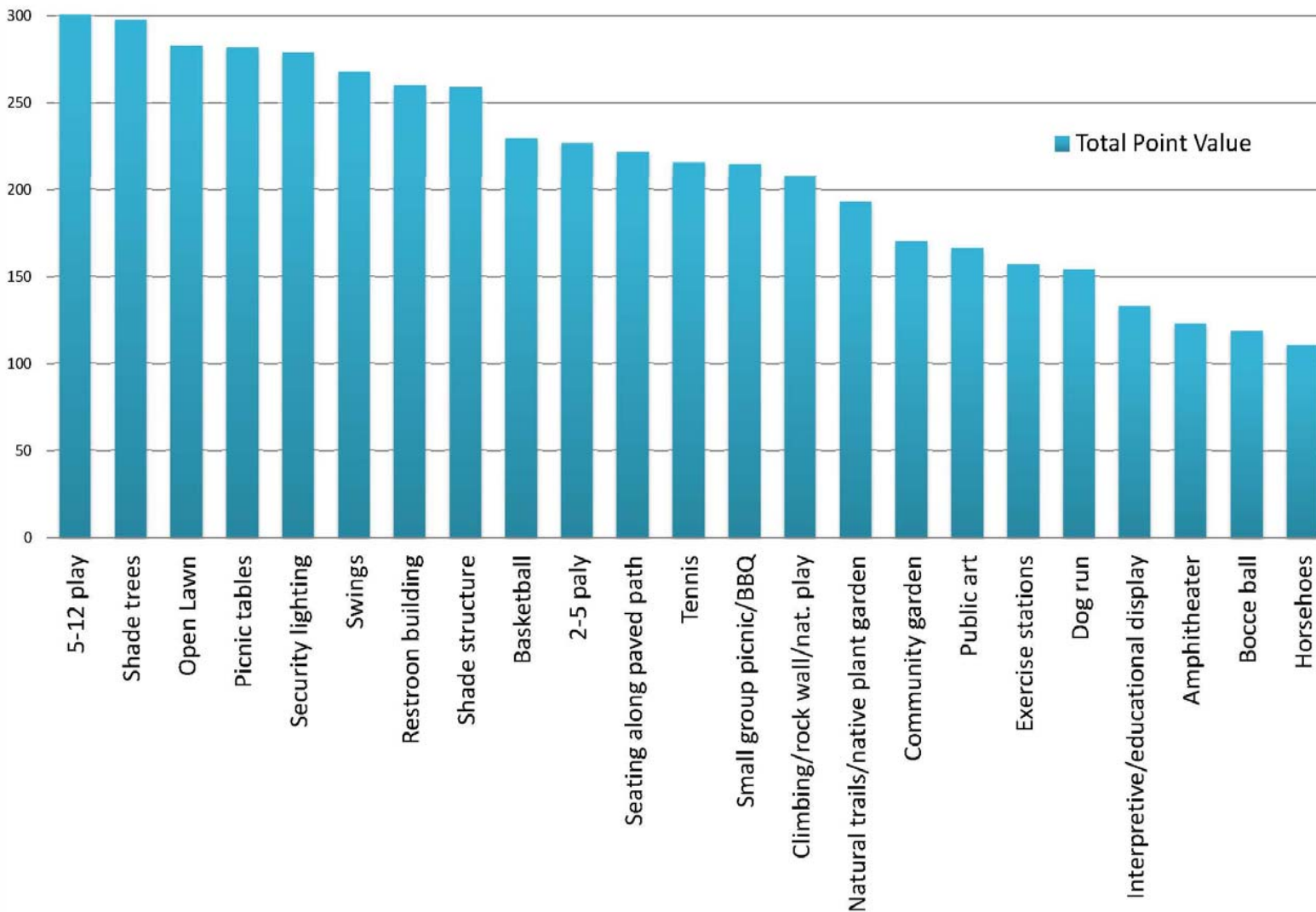
Provide responses be email to:
info@schmidt-design.com

or by fax to:
(619) 236-8792



QUESTIONNAIRE

FEEDBACK FROM QUESTIONNAIRE



TOP PRIORITIES

- Children's Play
- Shade Trees
- Open Lawn
- Picnic tables
- Security Lighting
- Swings
- Restroom building
- Shade structure
- Basketball or Tennis
- Seating along Paths
- Small Group Picnic/BBQ

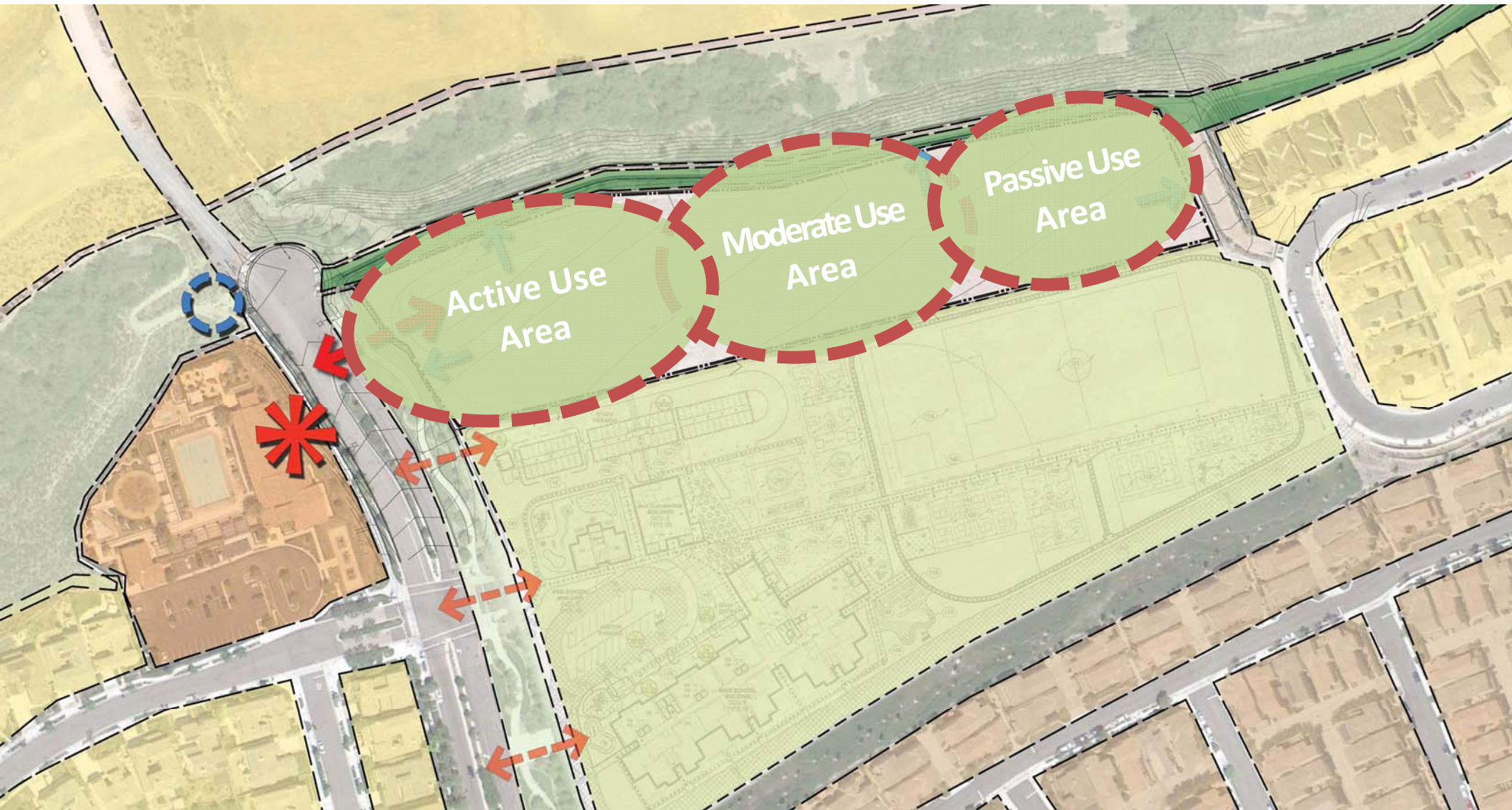




Gonzales Canyon Neighborhood Park

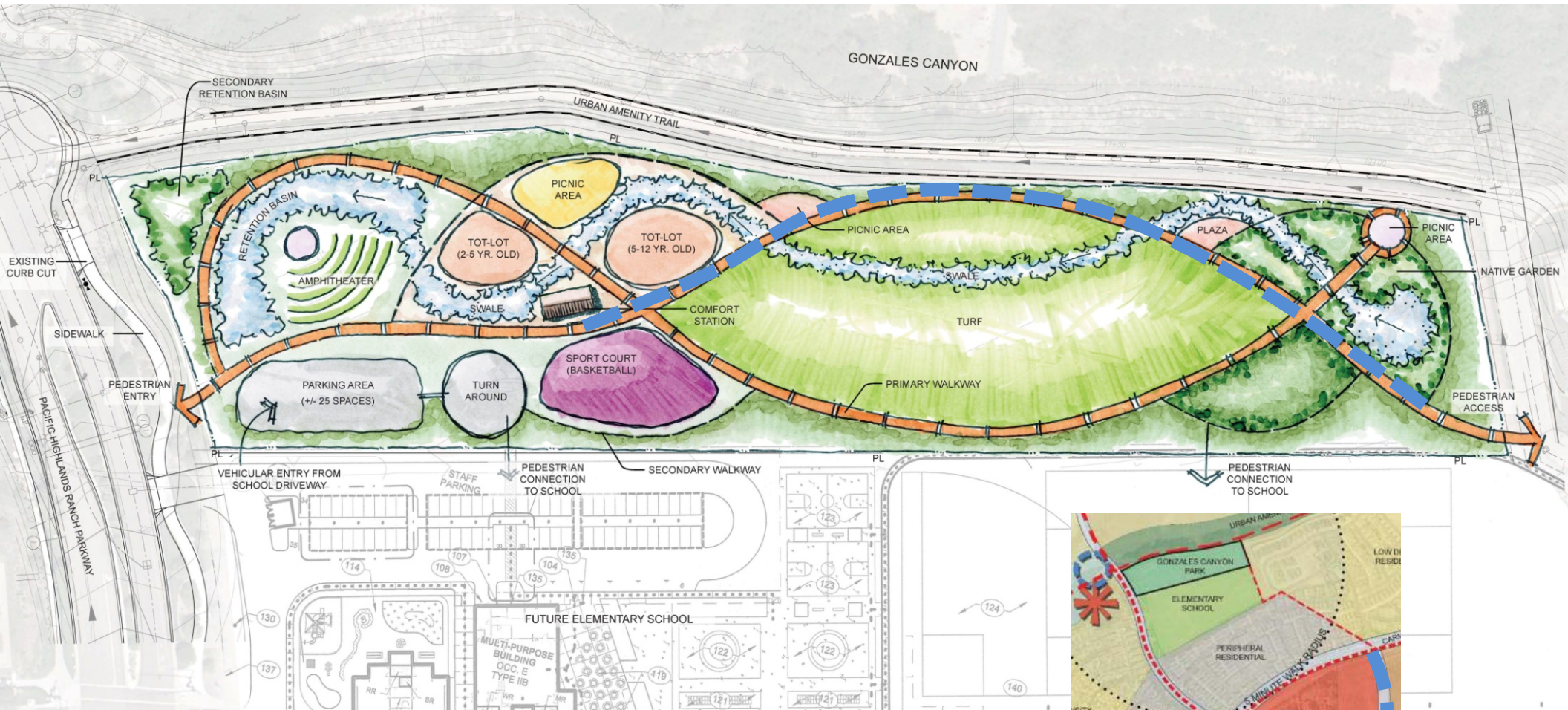
Preliminary Alternatives

EXPLORING THE POTENTIAL DESIGN FRAMEWORK

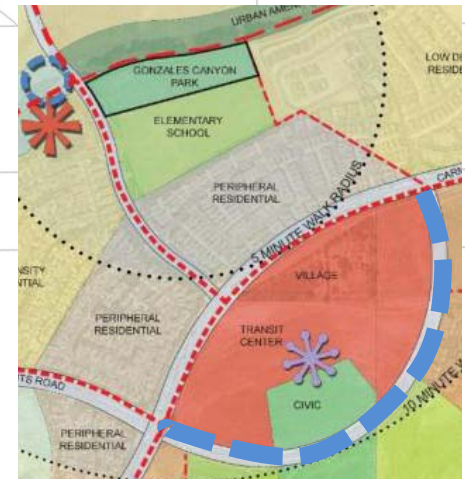


PRELIMINARY ALTERNATIVES

CONCEPT 1



ARC WALKWAYS

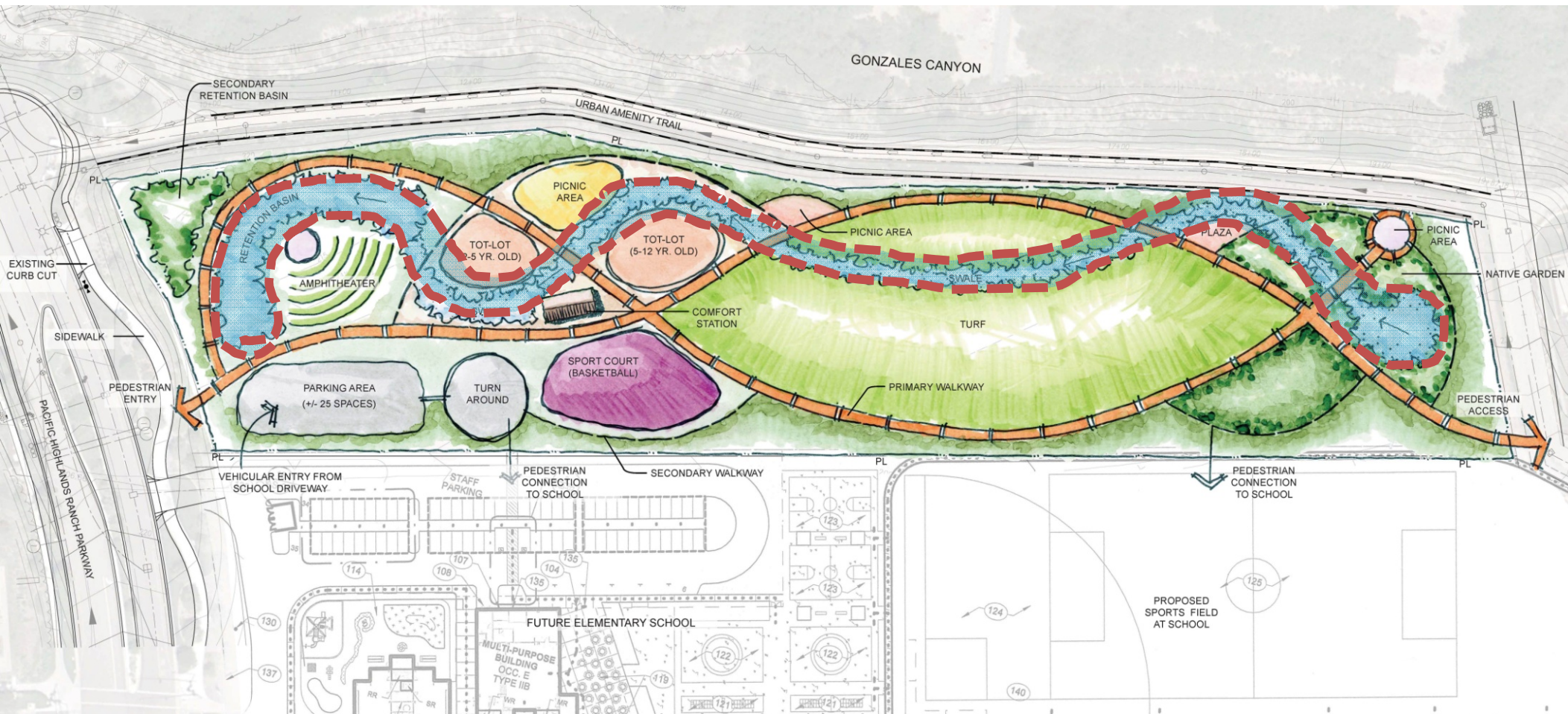


BALANCING ARTISTIC EXPRESSION IN DESIGN WITH ENVIRONMENTAL SENSITIVITY



PRELIMINARY ALTERNATIVES

CONCEPT 1



MEANDERING CREEK CONNECTION THROUGHOUT SITE



PRELIMINARY ALTERNATIVES

CONCEPT 1



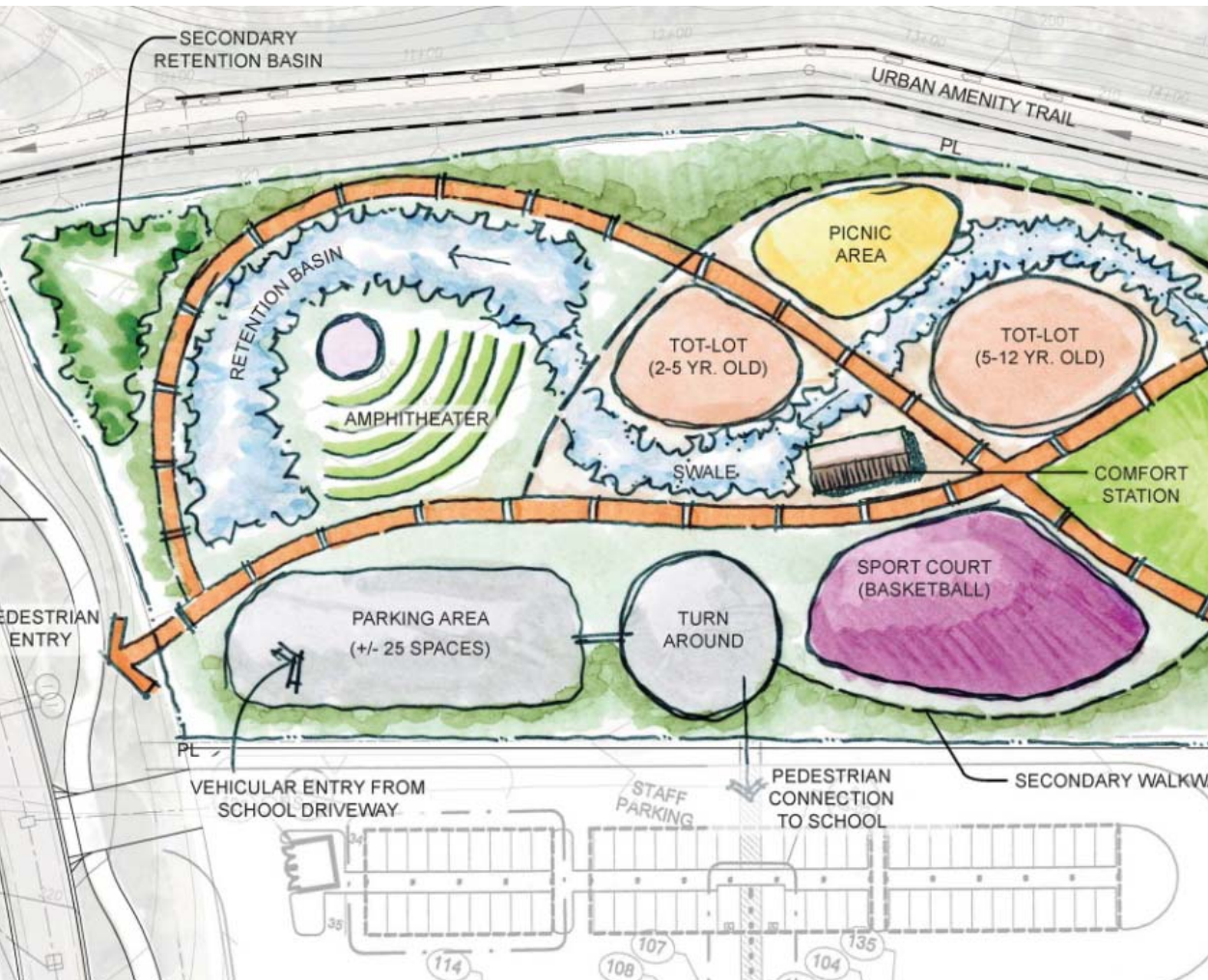
MEANDERING CREEK CONNECTION THROUGHOUT SITE

BALANCING ARTISTIC EXPRESSION IN DESIGN WITH ENVIRONMENTAL SENSITIVITY



PRELIMINARY ALTERNATIVES

CONCEPT 1

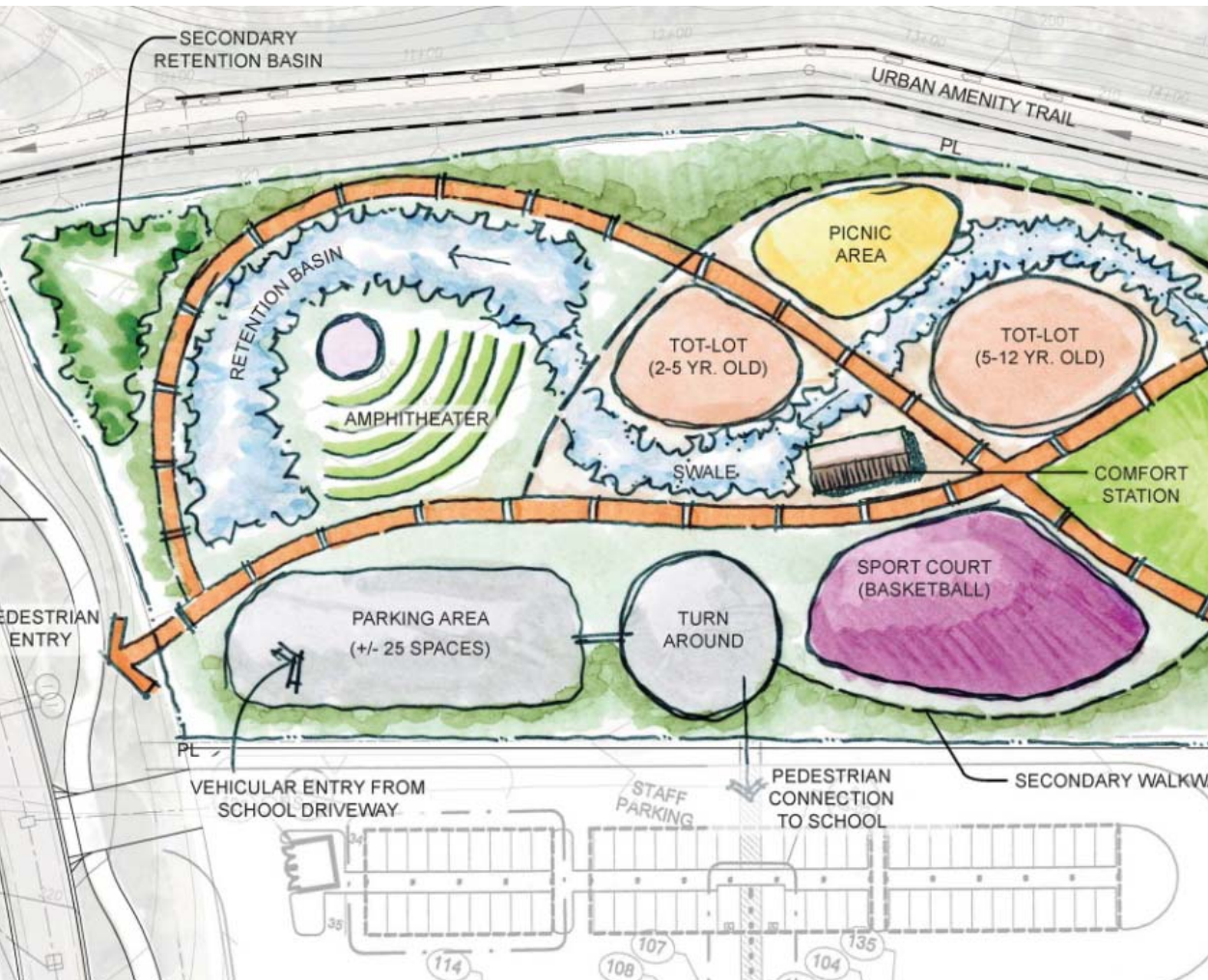


ACTIVE USE AREA



PRELIMINARY ALTERNATIVES

CONCEPT 1

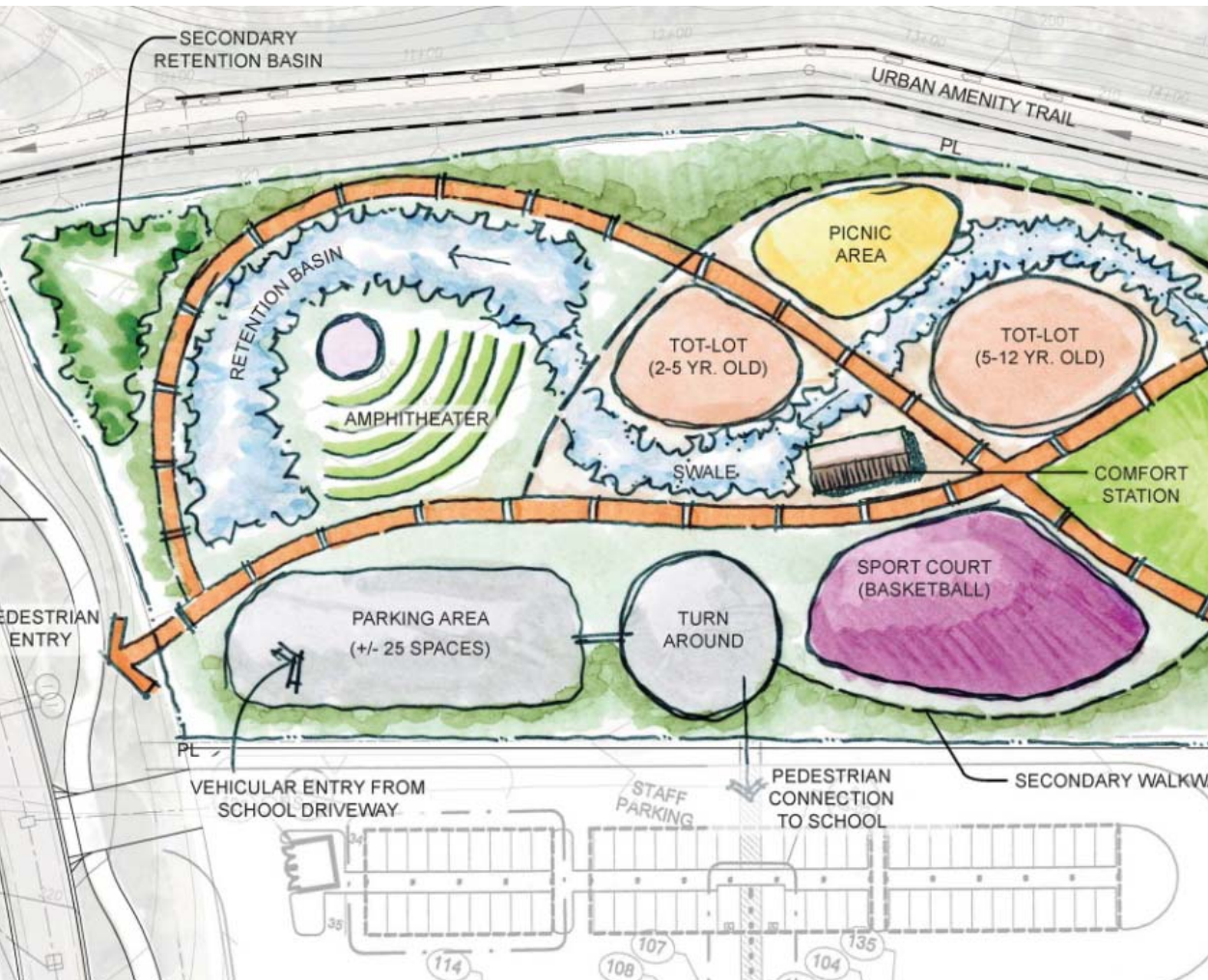


ACTIVE USE AREA



PRELIMINARY ALTERNATIVES

CONCEPT 1

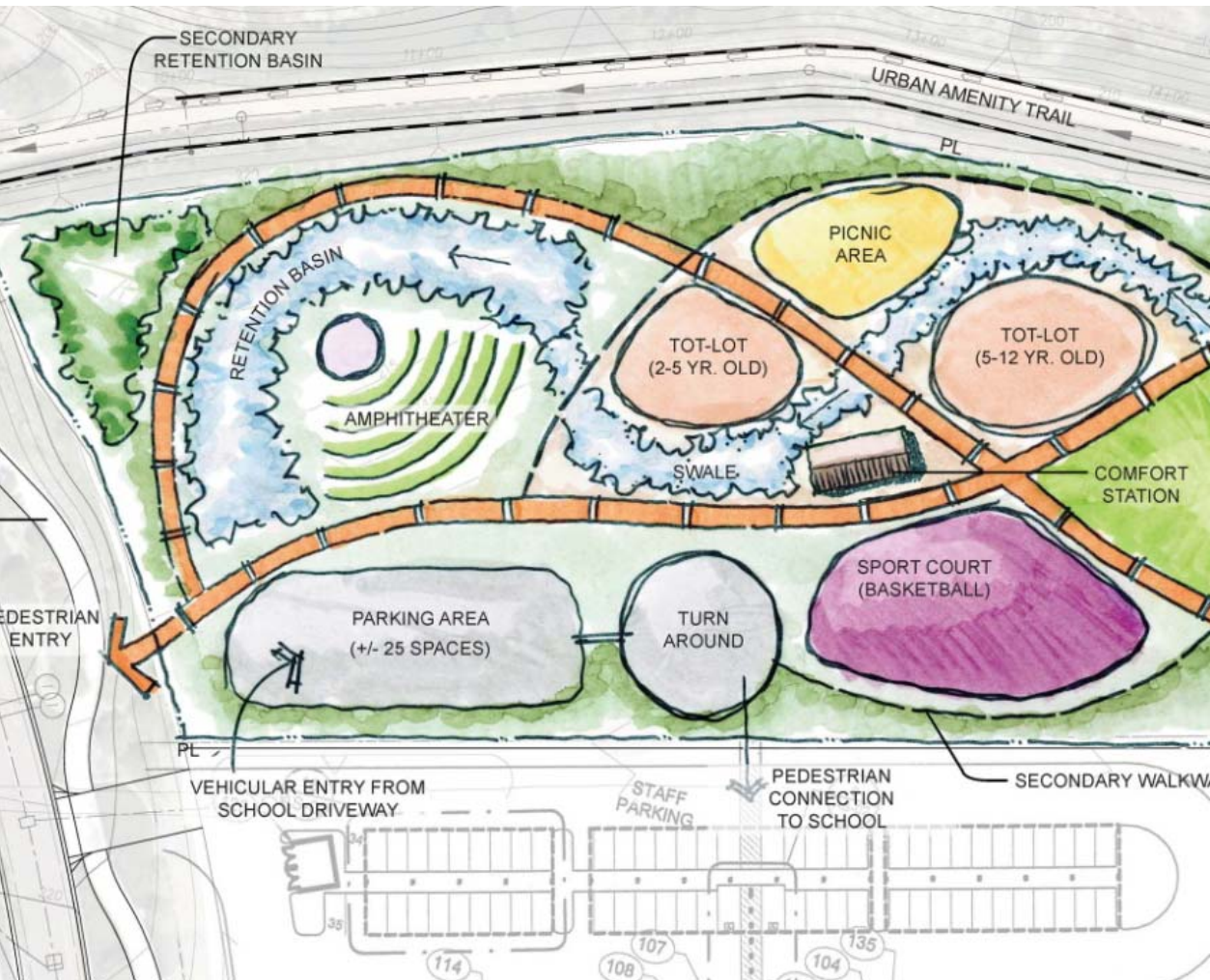


ACTIVE USE AREA



PRELIMINARY ALTERNATIVES

CONCEPT 1

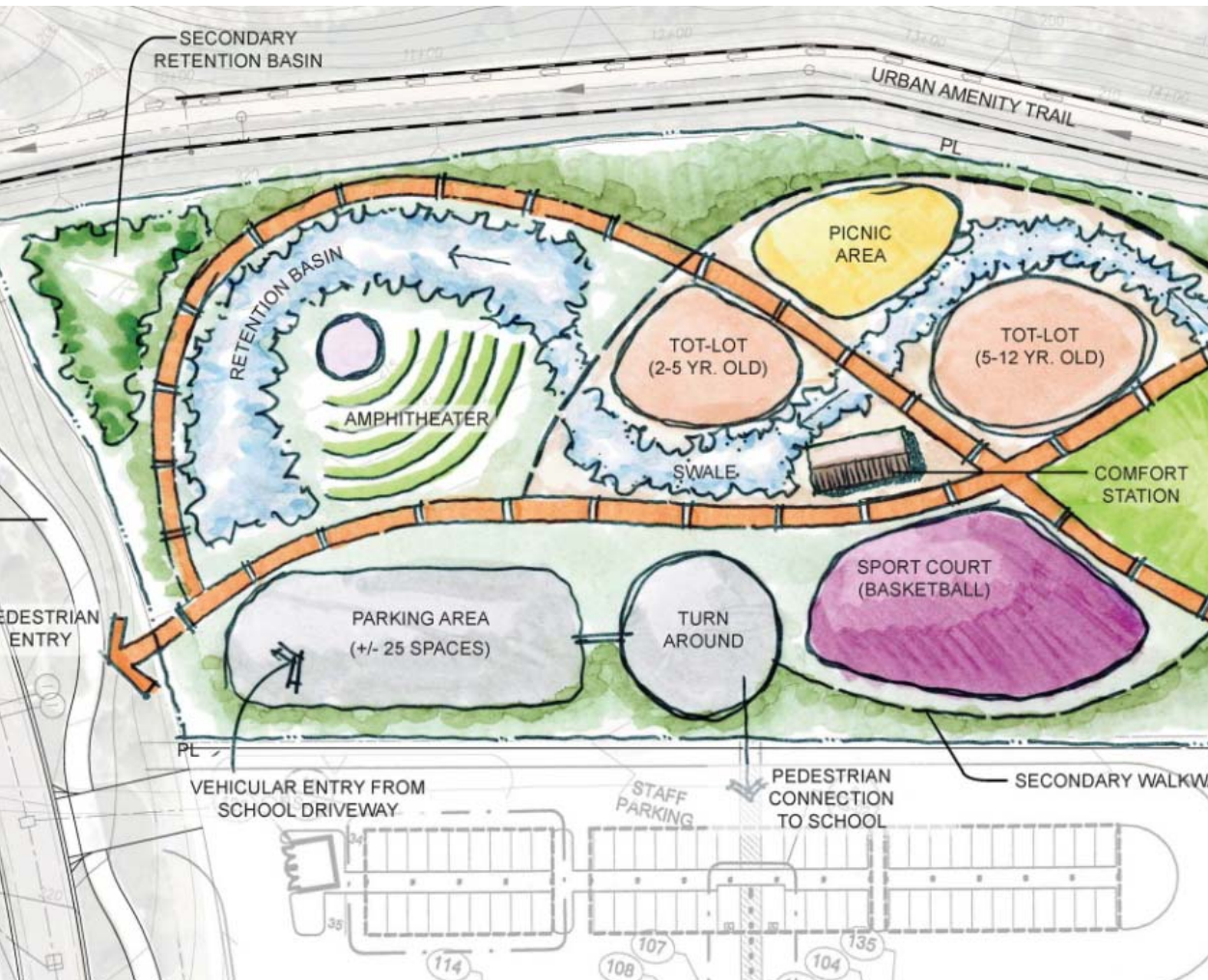


ACTIVE USE AREA



PRELIMINARY ALTERNATIVES

CONCEPT 1

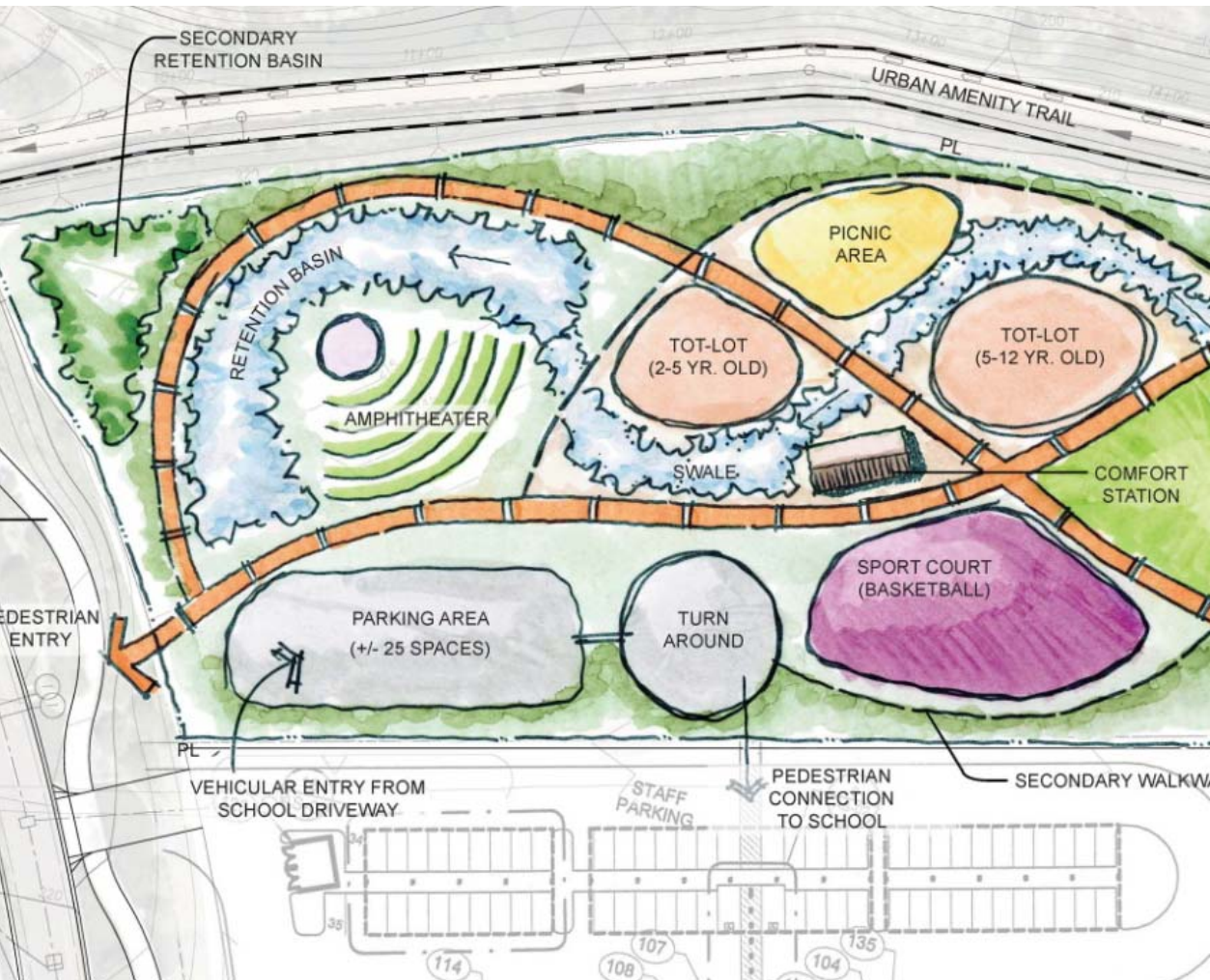


ACTIVE USE AREA

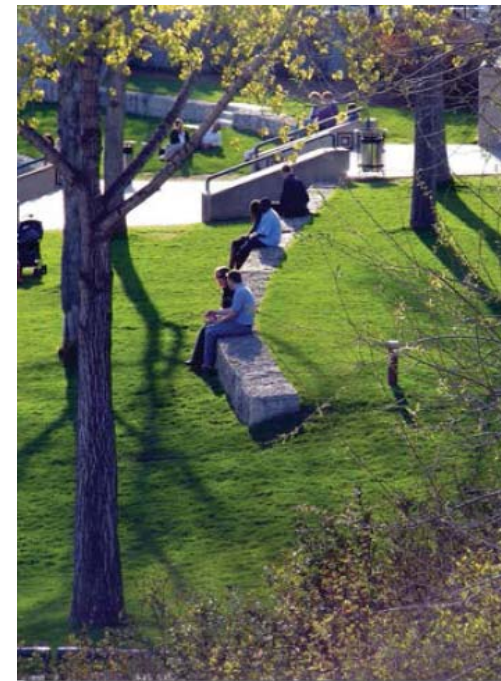


PRELIMINARY ALTERNATIVES

CONCEPT 1

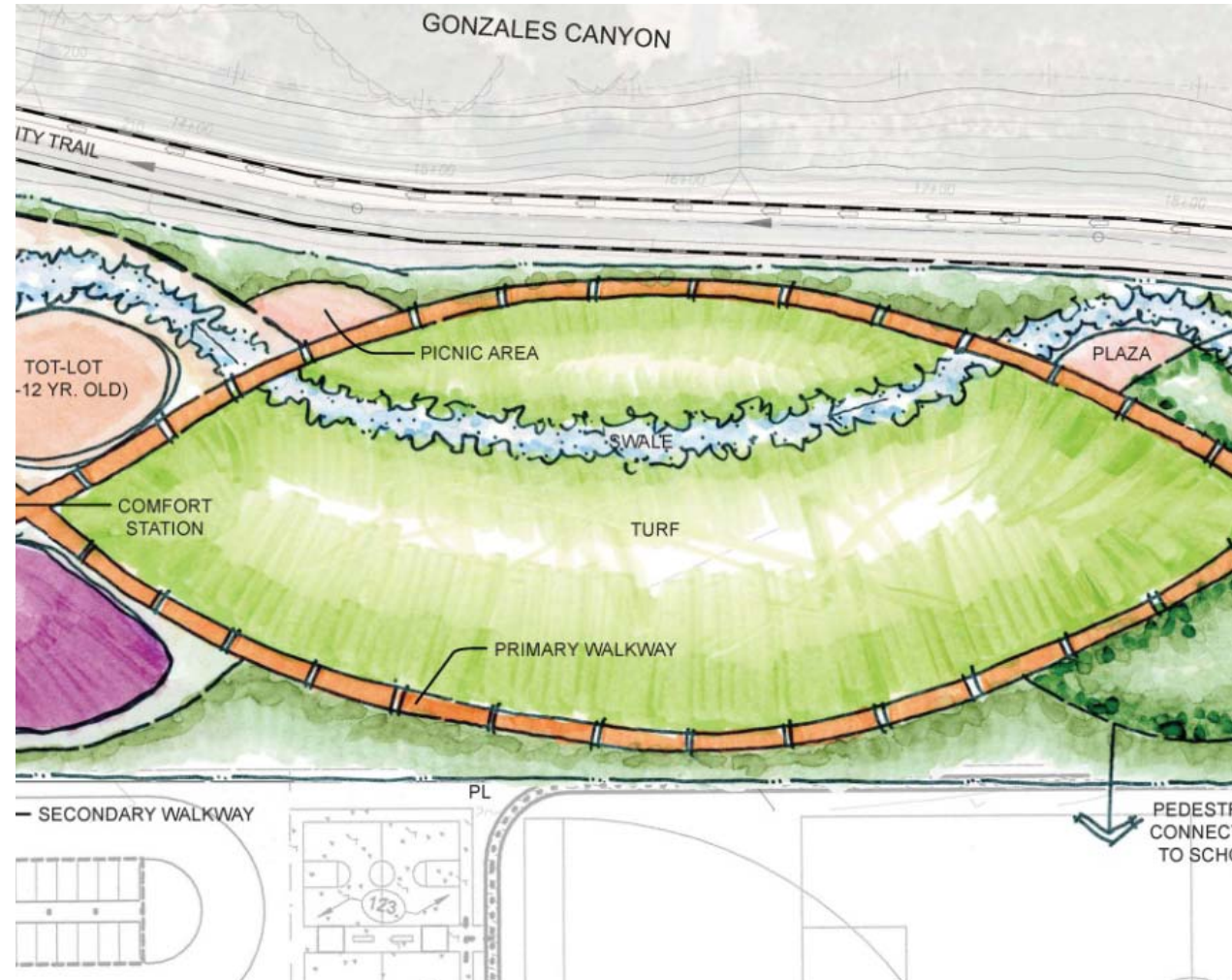


ACTIVE USE AREA



PRELIMINARY ALTERNATIVES

CONCEPT 1

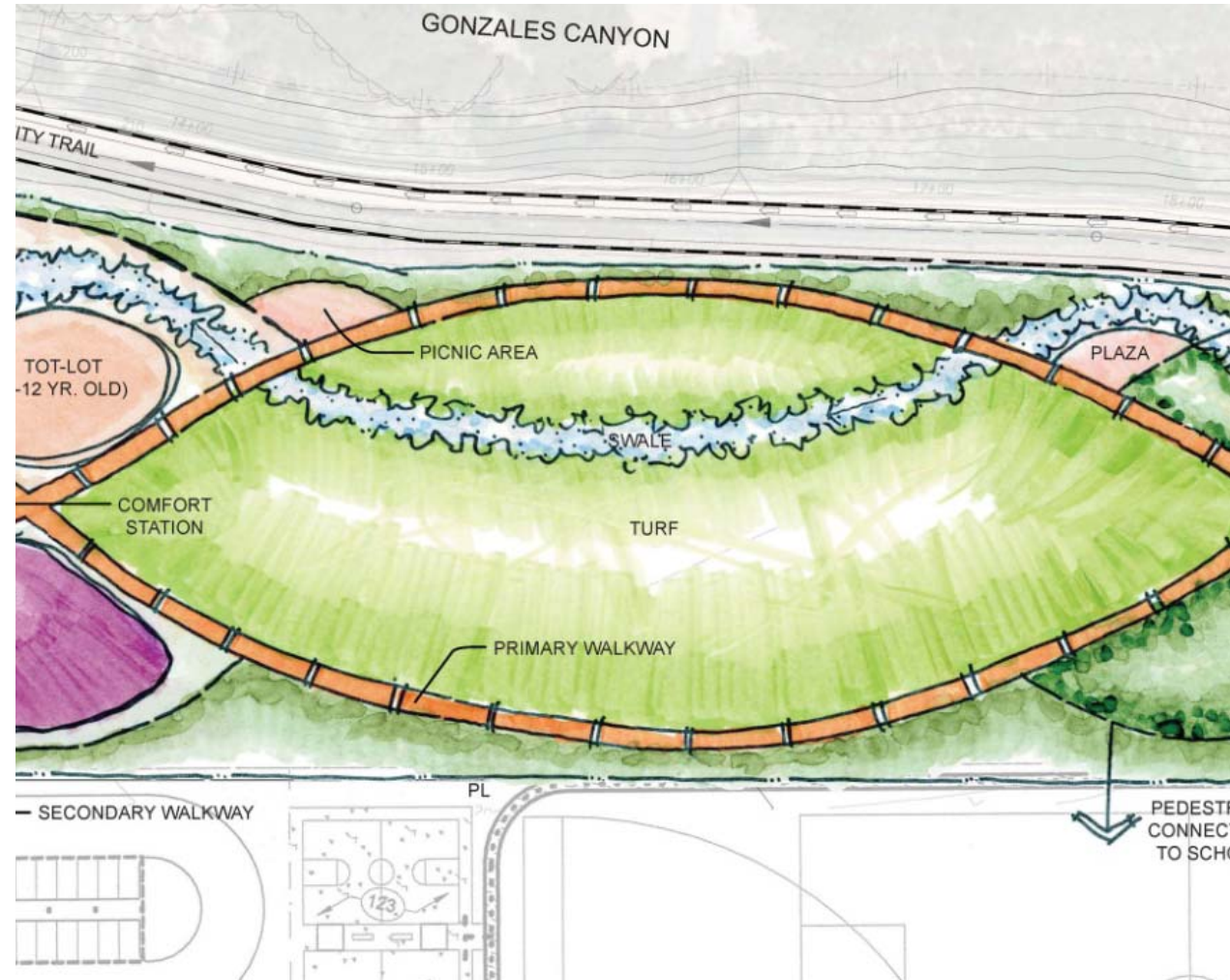


MODERATE USE AREA



PRELIMINARY ALTERNATIVES

CONCEPT 1

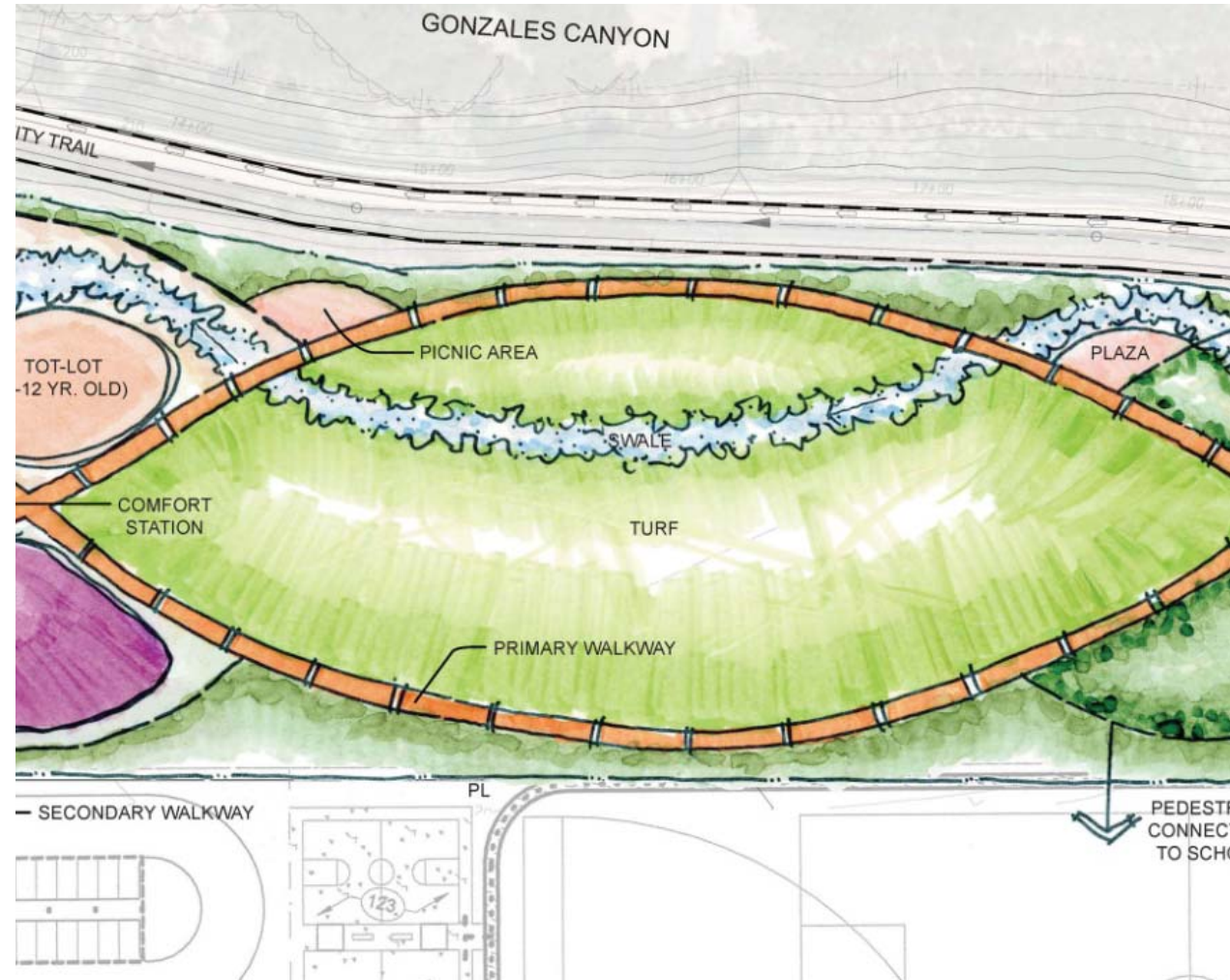


MODERATE USE AREA



PRELIMINARY ALTERNATIVES

CONCEPT 1



MODERATE USE AREA



PRELIMINARY ALTERNATIVES

CONCEPT 1



PASSIVE USE AREA



PRELIMINARY ALTERNATIVES

CONCEPT 1

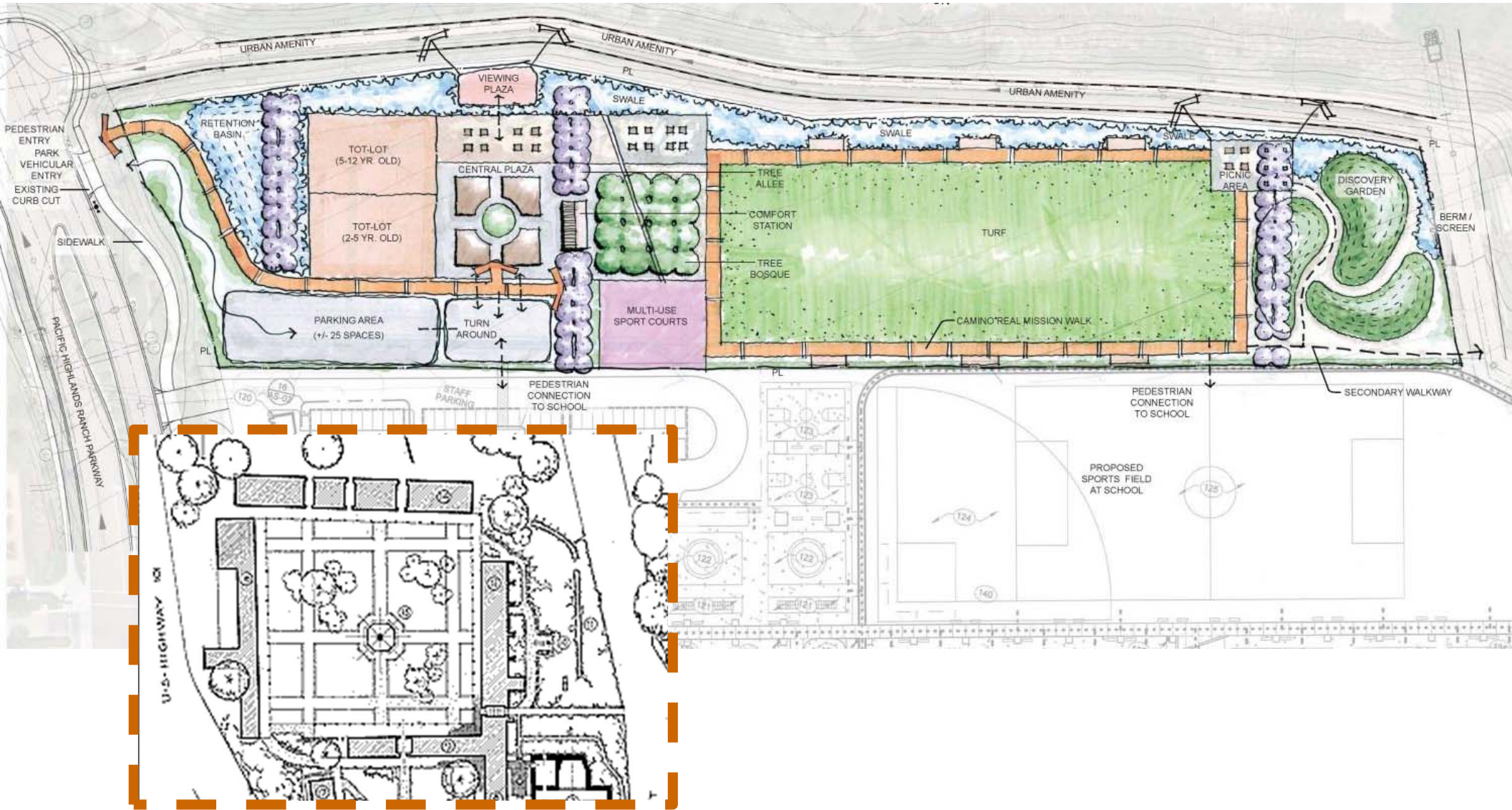


PASSIVE USE AREA



PRELIMINARY ALTERNATIVES

CONCEPT 2

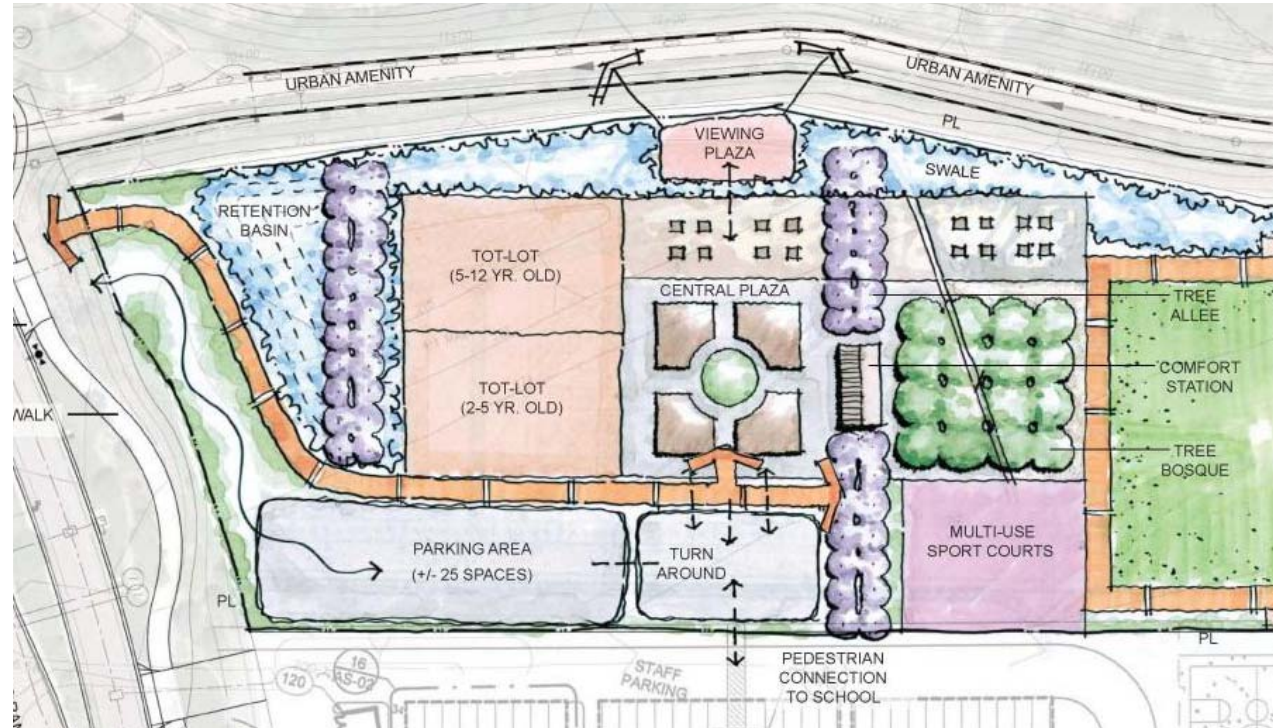


MISSION REVIVAL INSPIRATION



PRELIMINARY ALTERNATIVES

CONCEPT 2

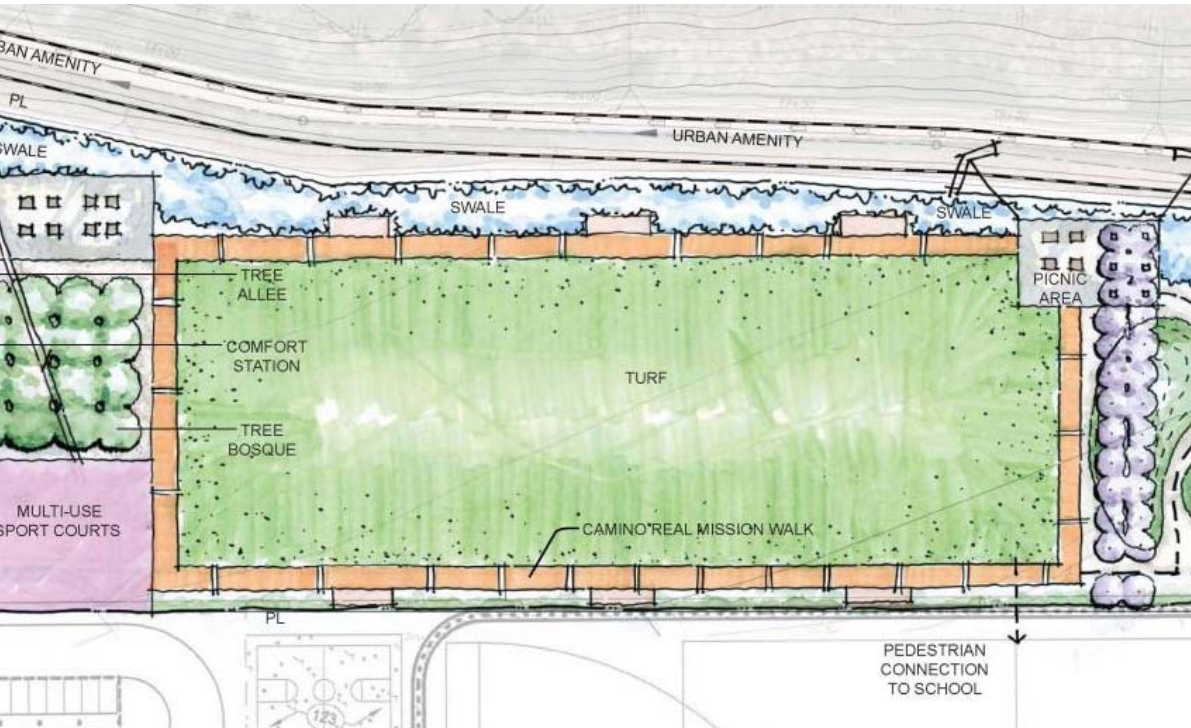


ACTIVE USE AREA



PRELIMINARY ALTERNATIVES

CONCEPT 2

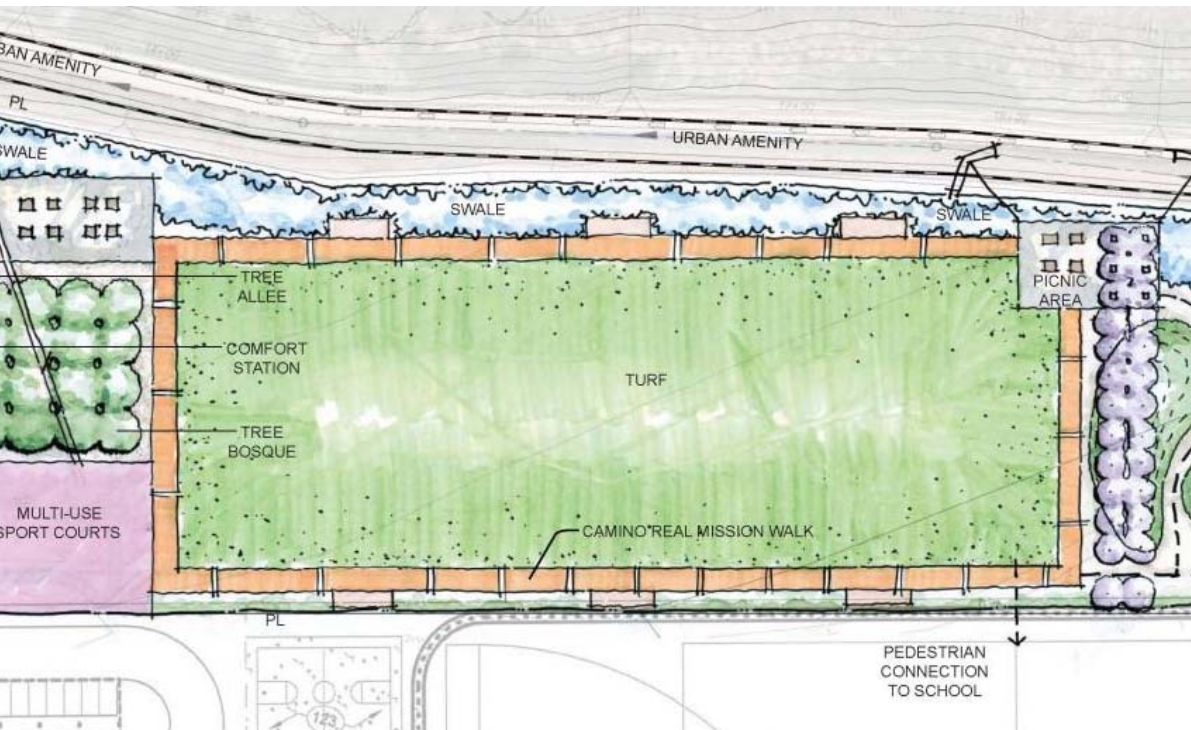


MODERATE USE AREA



PRELIMINARY ALTERNATIVES

CONCEPT 2

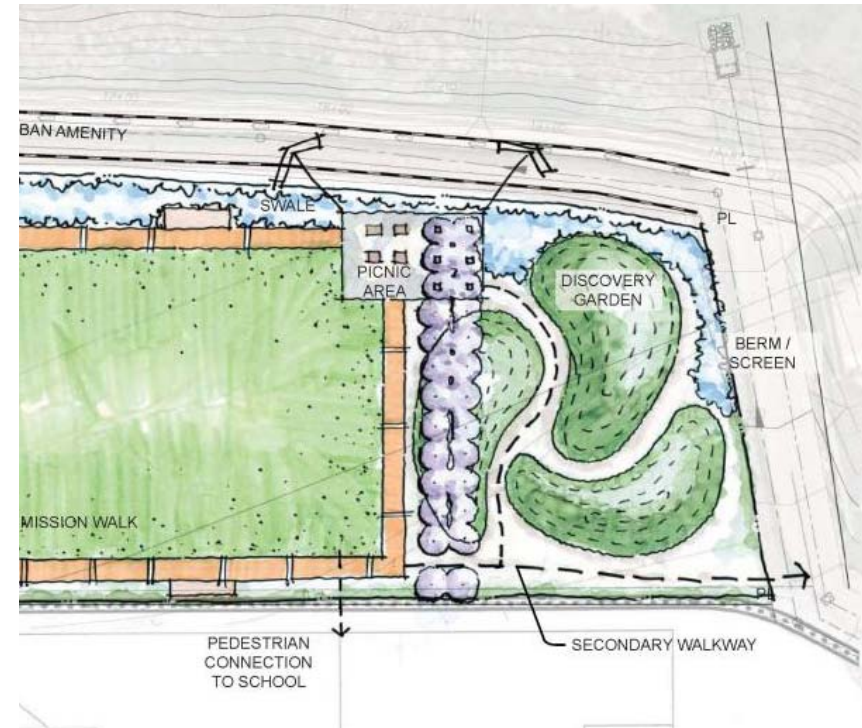


MODERATE USE AREA



PRELIMINARY ALTERNATIVES

CONCEPT 2

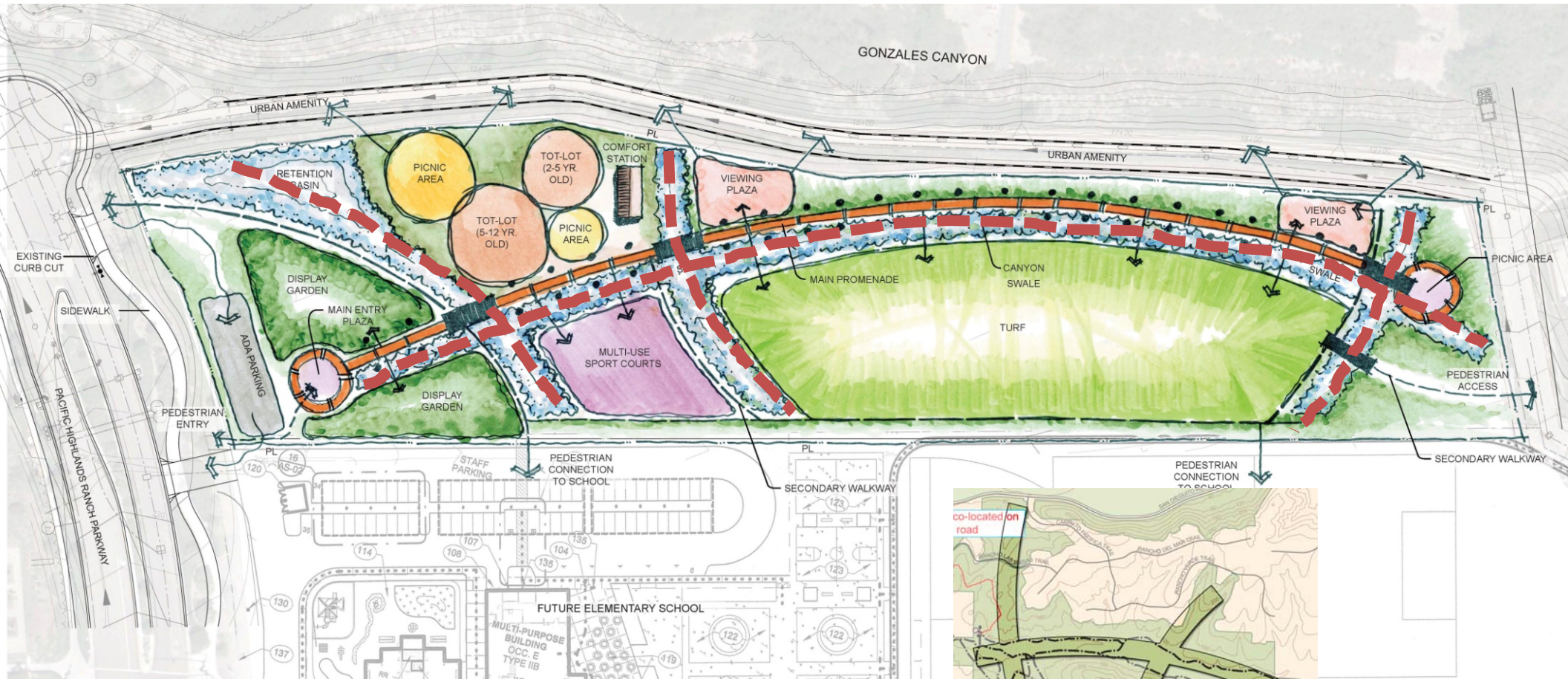


PASSIVE USE AREA



PRELIMINARY ALTERNATIVES

CONCEPT 3



CANYON INSPIRATION

BALANCING ARTISTIC EXPRESSION IN DESIGN WITH ENVIRONMENTAL SENSITIVITY



PRELIMINARY ALTERNATIVES

CONCEPT 3



TREE LINED WALKWAY



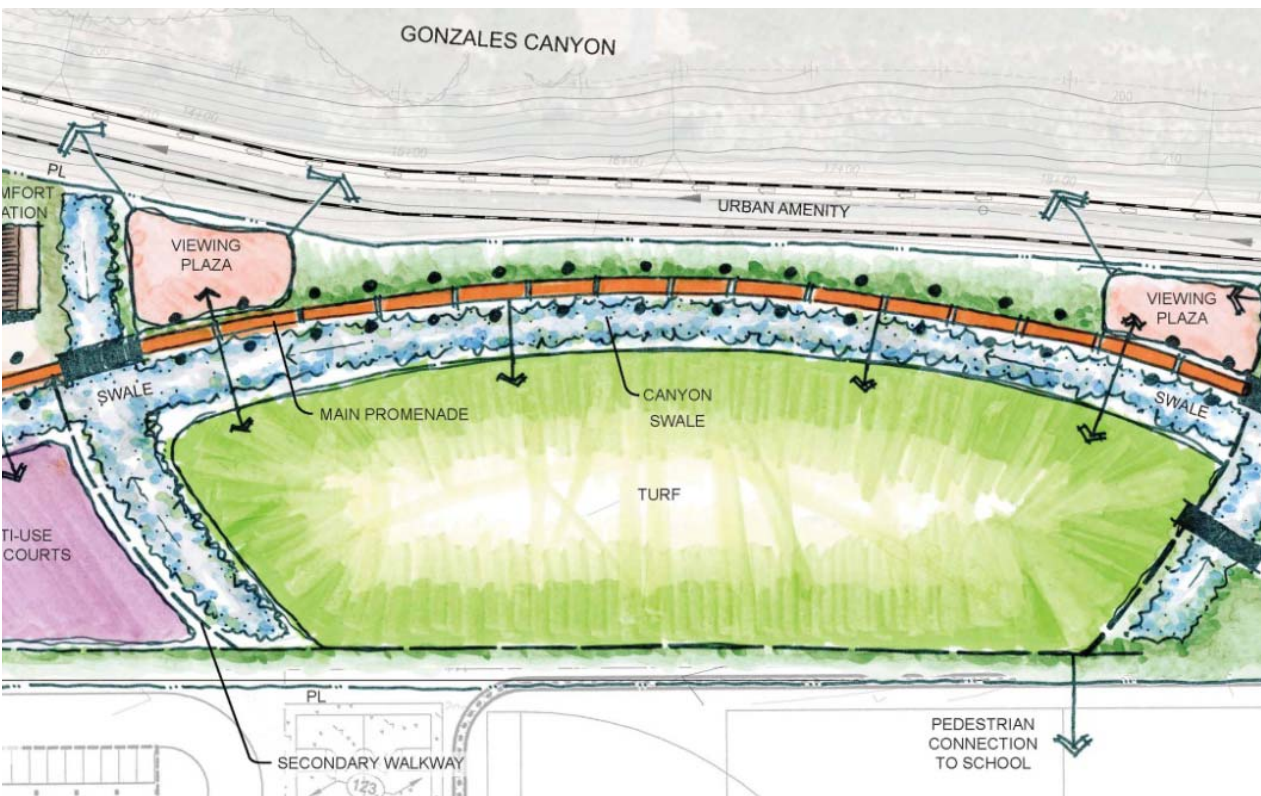
PRELIMINARY ALTERNATIVES

CONCEPT 3



PRELIMINARY ALTERNATIVES

CONCEPT 3



MODERATE USE AREA



PRELIMINARY ALTERNATIVES

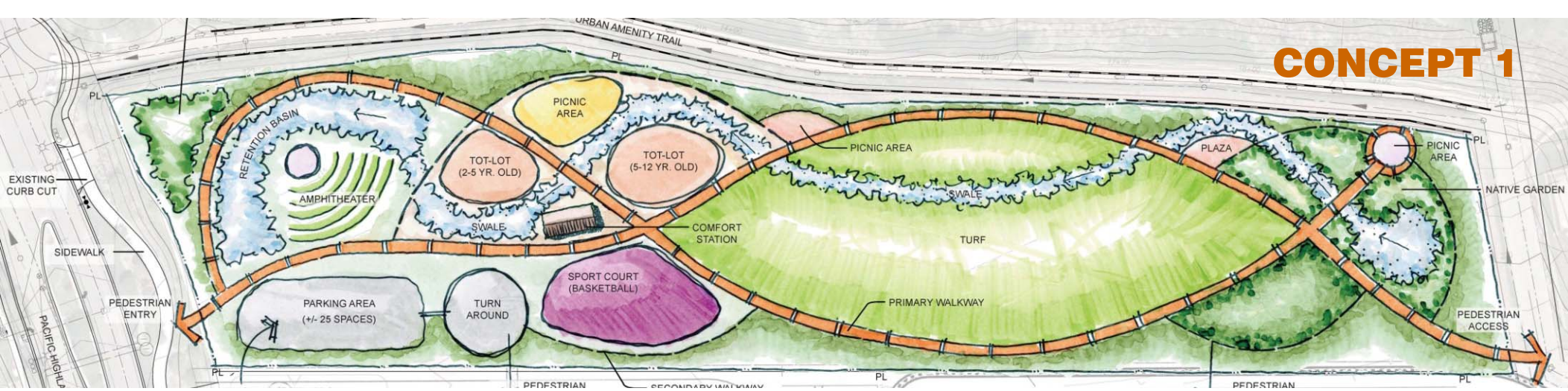
CONCEPT 3



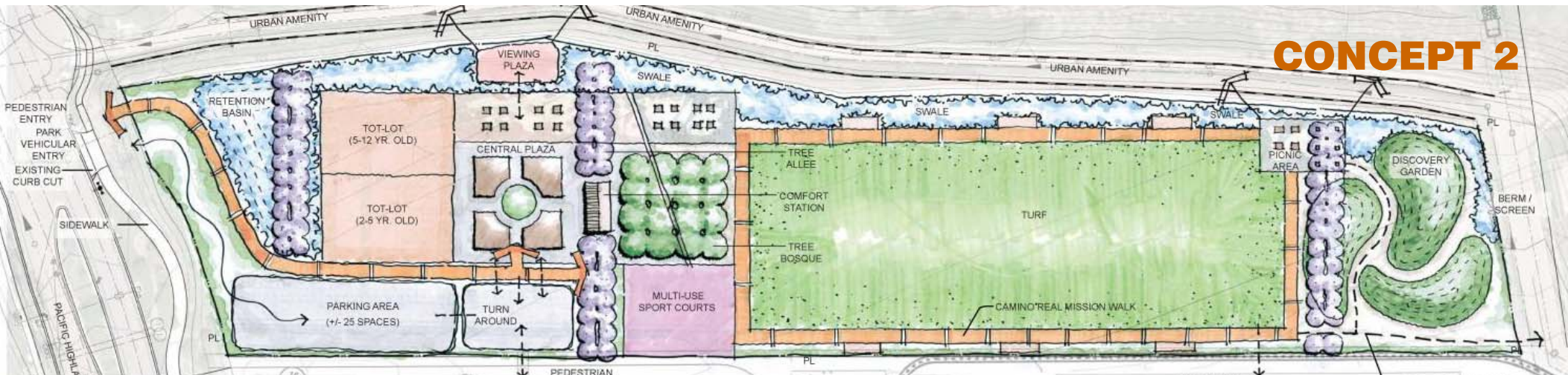
PASSIVE USE AREA



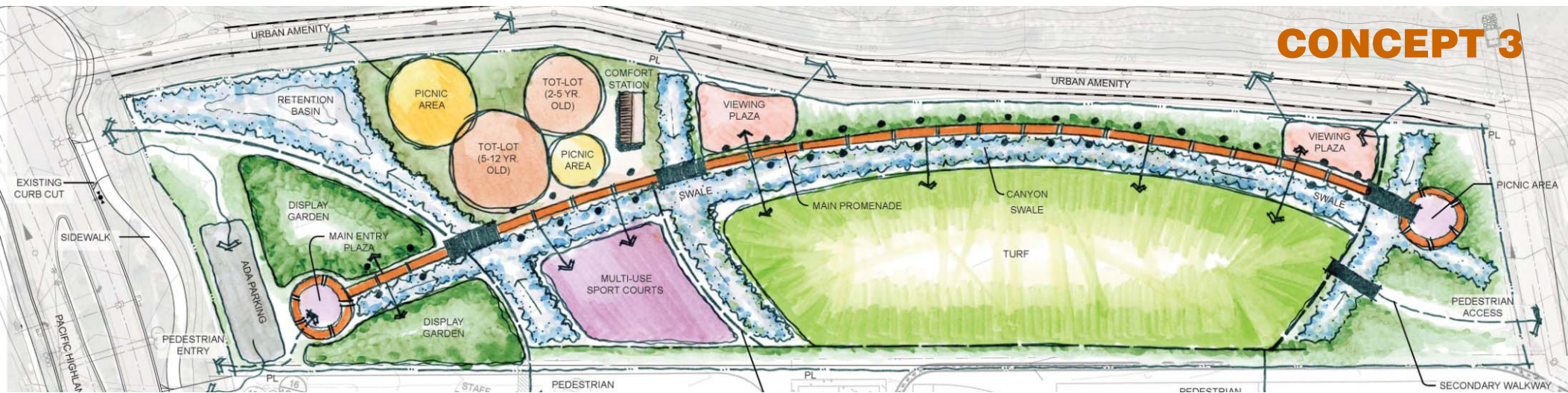
CONCEPT 1



CONCEPT 2



CONCEPT 3





Gonzales Canyon Neighborhood Park

Questions & Discussion